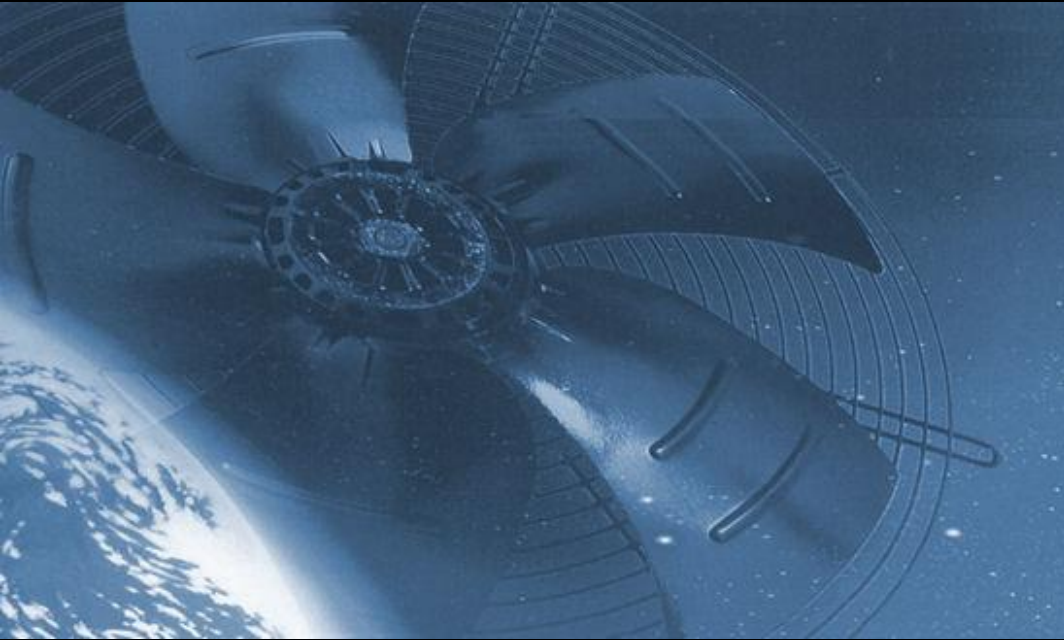
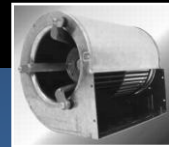
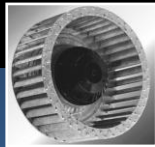


i n n o v a t i o n i n m o t i o n



Heating
Ventilation
Air Conditioning
Refrigeration



SUMMARY CATALOG

 **Fans-tech**
by Pelonis Technologies

innovation in motion

PTI's innovative Fans-Tech® products for heating, ventilation, air conditioning, and refrigeration are designed for the most demanding requirements in industry. Advanced designs in AC and DC centrifugal fans, axial fans, inline fans, and metal fan impellers and rotors provide exceptional quality and high performance for a variety of cooling applications.

Fans-Tech® products are RoHS compliant, available in various voltages, and are made in accordance with internationally recognized standards.

Advanced production equipment and flexible manufacturing capabilities ensure competitive prices, reduced lead times, and adequate stock levels at all times. Customers can also choose from a variety of ready models or request custom designs according to their specifications.



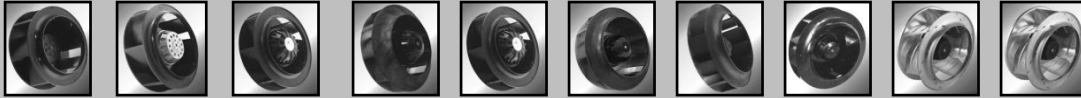
- AC Centrifugal Fans
- DC Centrifugal Fans
- AC Axial Fans
- DC Axial Fans
- Rotor Fan Blades
- Metal Axial Fan Impellers
- InLine Fans

PTI is continuously committed to offering value-added products with exceptional quality and service in hopes of building strong partnerships with our customers. By working closely together, we can bring new ideas to life that will benefit the industries we serve.

product specifications

1

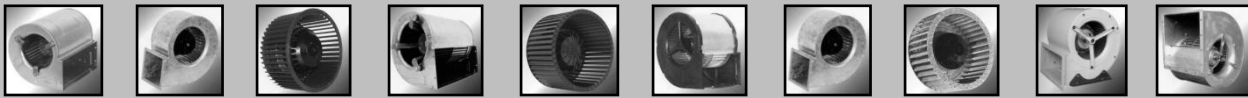
AC Centrifugal Fans w/backward curved blades



FH133A FH175A FH190R FH190S FH220M FH220L FH225A FH225B FH250M FH280C FH320A FH355A

| model | size | | speed rpm | airflow | | power W | voltage/freq V/Hz | current A | capacitor μF/VDB | insulation class |
|--------|------|------|--------------|----------|-------------------|------------|----------------------|--------------|---------------------|---------------------|
| | mm | in | | CFM | m ³ /h | | | | | |
| FH133A | 133 | 5.2 | 2550 | 118 | 200 | 30 | 230/50 | 0.19 | / | F |
| FH175A | 175 | 6.9 | 2350/2200 | 239/223 | 406/379 | 61/62 | 230/50/60 | 0.39/0.34 | / | F |
| FH190R | 190 | 7.5 | 2600/2930 | 318/356 | 540/605 | 87/109 | 230/50/60 | 0.39/0.48 | 3/450 | F |
| FH190S | 190 | 7.5 | 2950 | 359 | 610 | 100 | 115/60 | 0.88 | 8/250 | F |
| FH220M | 220 | 8.6 | 2400/2600 | 427/465 | 725/790 | 95/120 | 230/50/60 | 0.4/0.5 | 3/450 | F |
| FH220L | 220 | 8.6 | 2880 | 518 | 880 | 124 | 115/60 | 1.08 | 10/250 | F |
| FH225A | 225 | 8.8 | 2600/2900 | 640/717 | 1087/1218 | 142/183 | 230/50/60 | 0.67/0.8 | 4/450 | F |
| FH225B | 225 | 8.8 | 2650/3000 | 511/577 | 868/981 | 110/112 | 230/50/60 | 0.53/0.62 | 3/450 | F |
| FH250M | 250 | 9.8 | 2600/2790 | 777/812 | 1320/1380 | 174/246 | 230/50/60 | 0.76/1.08 | 5/450 | F |
| FJ250L | 250 | 9.8 | 2990 | 900 | 1530 | 287 | 115/60 | 2.51 | 25/250 | F |
| FH280C | 280 | 11.0 | 2560 | 942 | 1600 | 238 | 230/50 | 1.03 | 8/450 | F |
| FH320A | 320 | 12.6 | 1400/1600 | 912/1059 | 1550/1800 | 105/145 | 230/50/60 | 0.5/0.65 | 4/450 | F |
| FH355A | 355 | 14.0 | 1400 | 1324 | 2250 | 172 | 230/50 | 0.76 | 6/450 | F |

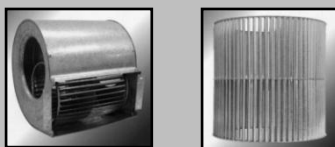
AC Centrifugal Fans w/forward curved blades



FS133C FD140A FD150A FS151A FD160A FS168A FD180D FD200B FS255A FS320A

| model | size | | speed rpm | airflow | | power W | voltage/freq V/Hz | current A | capacitor μF/VDB | insulation class |
|--------|------|------|--------------|---------|-------------------|------------|----------------------|--------------|---------------------|---------------------|
| | mm | in | | CFM | m ³ /h | | | | | |
| FS133C | 133 | 5.2 | 1250 | 537/486 | 913/825 | 275/285 | 230/50/60 | 1.2/1.25 | 5/450 | F |
| FD140A | 140 | 5.5 | 2350 | 324 | 550 | 210 | 230/50 | 1.0 | 4/450 | F |
| FD150A | 150 | 5.91 | 1818 | 230 | 390 | 114 | 230/50 | 0.51 | 2/450 | F |
| FS151A | 151 | 5.94 | 900/800 | 383/353 | 650/600 | 95/101 | 230/50/60 | 0.42/0.45 | 2/450 | F |
| FD160A | 160 | 6.3 | 2600/2750 | | \ | 204/302 | 230/50/60 | 0.93/1.4 | 4/450 | F |
| FS168A | 168 | 6.6 | 813 | 363 | 616 | 113 | 230/50 | 0.48 | 2/450 | F |
| FD180D | 180 | 7.0 | 1310/1370 | 400/412 | 680/700 | 135/190 | 230/50/60 | 0.6/0.83 | 4/450 | F |
| FD200B | 200 | 7.8 | 1300 | | \ | 104 | 230/50 | 0.46 | 3/450 | F |
| FS255A | 255 | 10.0 | 1450 | 1966 | 3340 | 494 | 220/50 | 2.29 | 15/450 | F |
| FS320A | 320 | 12.6 | 1390 | 5886 | 10000 | 4000 | 400/50 | 7.5 | | F |

Rotor Fan Blades



SWP Series (mm)
 141-218
 144-162
 145-130
 145-190
 160-160
 160-200
 160-240
 250-250

SWK Series (mm)
 67-30
 145-146
 150-105
 160-150
 256-256
 256-305
 380-280
 380-380

- ▶ all metal blade designs
- ▶ custom sizes available upon request

product specifications

DC Centrifugal Fans



R1D133-AA R1D133-AB R1D175-AB R1D175-AA R1D190-AB R1D190-AA R1D220-AB R1D220-AA R1D225-AB R1D225-AA R1D250-AB R1D250-AA R1D310-AB R1D310-AA R3D355-AB R3D400-AB R3D400-AA

| model | size | | speed rpm | airflow | | power W | vdc V | voltage range V | bearing type | noise dBA | max ambient temp °C |
|-----------|------|------|--------------|---------|-------------------|------------|----------|-----------------------|-----------------|--------------|------------------------|
| | mm | in | | CFM | m ³ /h | | | | | | |
| R1D133-AB | 133 | 5.2 | 3900 | 212 | 360 | 28 | 24 | 16-28 | ball | 63 | 60 |
| R1D133-AA | 133 | 5.2 | 3900 | 212 | 360 | 28 | 48 | 36-57 | ball | 63 | 60 |
| R1D175-AB | 175 | 6.9 | 3100 | 294 | 500 | 34 | 24 | 16-28 | ball | 65 | 60 |
| R1D175-AA | 175 | 6.9 | 3100 | 294 | 500 | 34 | 48 | 36-57 | ball | 65 | 60 |
| R1D190-AB | 190 | 7.5 | 3250 | 330 | 560 | 80 | 24 | 16-28 | ball | 68 | 60 |
| R1D190-AA | 190 | 7.5 | 3250 | 321 | 545 | 71 | 48 | 36-57 | ball | 68 | 60 |
| R1D220-AB | 220 | 8.6 | 3150 | 589 | 1000 | 106 | 24 | 16-28 | ball | 76 | 60 |
| R1D220-AA | 220 | 8.6 | 3150 | 589 | 1000 | 100 | 48 | 36-57 | ball | 73 | 60 |
| R1D225-AB | 225 | 8.8 | 2600 | 647 | 1100 | 100 | 24 | 16-28 | ball | 67 | 60 |
| R1D225-AA | 225 | 8.8 | 2700 | 677 | 1150 | 95 | 48 | 36-57 | ball | 67 | 60 |
| R1D250-AB | 250 | 9.8 | 2540 | 671 | 1140 | 93 | 24 | 16-28 | ball | 73 | 60 |
| R1D250-AA | 250 | 9.8 | 2600 | 706 | 1200 | 105 | 48 | 36-57 | ball | 72 | 60 |
| R1D310-AB | 310 | 12.2 | 1600 | 1124 | 1910 | 90 | 24 | 16-28 | ball | 64 | 60 |
| R1D310-AA | 310 | 12.2 | 1600 | 1124 | 1910 | 90 | 48 | 36-57 | ball | 64 | 60 |
| R3D355-AB | 355 | 13.9 | 1560 | 1642 | 2790 | 178 | 48 | 36-57 | ball | 69 | 60 |
| R3D400-AB | 400 | 15.7 | 1520 | 1648 | 2800 | 390 | 48 | 200-277 | ball | 73 | 60 |
| R3D400-AA | 400 | 15.7 | 1290 | 1766 | 3000 | 200 | 48 | 36-57 | ball | 65 | 60 |

AC Axial Fans



FZ290C FZ360B FZ360D FZ400B FZ450C FZ500B FZ560B FZ630D FZ710F FZ800B

| model | size | | speed rpm | airflow | | power W | voltage/freq V/Hz | current A | capacitor/ connection | insulation class |
|--------|------|------|--------------|-------------|-------------------|------------|----------------------|--------------|--------------------------|---------------------|
| | mm | in | | CFM | m ³ /h | | | | | |
| FZ290C | 290 | 11.4 | 1320/1500 | 677/771 | 1150/1310 | 74/86 | 230/50/60 | 0.32/0.36 | 2.0/450 | F |
| FZ360B | 360 | 14.2 | 880/990 | 1089/1212 | 1850/2060 | 71/92 | 230/50/60 | 0.30/0.39 | 2.5/450 | F |
| FZ360D | 360 | 14.2 | 1330 | 1883 | 3200 | 145 | 230/50 | 0.57 | 4.0/450 | F |
| FZ400B | 400 | 15.7 | 1400 | 3531 | 6000 | 250 | 230/50 | 1.1 | 8.0/450 | F |
| FZ450C | 450 | 17.7 | 1200 | 3531 | 6000 | 310 | 230/50 | 1.35 | 8.0/450 | F |
| FZ500B | 500 | 19.7 | 1229/890 | 5474/3826 | 9300/6500 | 824/518 | 3~400/50 | 1.76/1.17 | Δ/Y | F |
| FZ560B | 560 | 22.0 | 880/670 | 4709/3826 | 8000/6500 | 420/280 | 3~400/50 | 0.76/0.46 | Δ/Y | F |
| FZ630D | 630 | 24.8 | 620/485 | 5886/3826 | 10000/6500 | 320/195 | 3~400/50 | 0.75/0.4 | Δ/Y | F |
| FZ710F | 710 | 27.9 | 900/680 | 8829/7652 | 15000/13000 | 980/700 | 3~400/50 | 2.0/1.4 | Δ/Y | F |
| FZ800B | 800 | 31.5 | 880/660 | 14714/11772 | 25000/20000 | 2000/1250 | 3~400/50 | 4.0/2.3 | Δ/Y | F |

Metal Axial Fan Impellers



260mm (10.2") 355mm (13.9") 450mm (17.7") 600mm (23.6") 660mm (25.9") 750mm (29.5") 800mm (31.5")

- ▶ all metal blade designs
- ▶ custom sizes available upon request

DC Axial Fans



W1D180-AA/AB

| model | size | | speed rpm | airflow | | power W | vdc V | voltage range V | bearing type | noise dBA | max ambient temp °C |
|-----------|------|-----|--------------|---------|-------------------|------------|----------|--------------------|-----------------|--------------|------------------------|
| | mm | in | | CFM | m ³ /h | | | | | | |
| W1D180-AB | 180 | 7.1 | 4550 | 536 | 911 | 93 | 24 | 16-28 | ball | 68 | 60 |
| W1D180-AA | 180 | 7.1 | 4600 | 550 | 935 | 100 | 48 | 36-57 | ball | 69 | 60 |

InLine Duct Fans



JH100A
JH100B



JH125A
JH125B



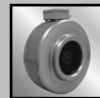
JH150A
JH150B



JH160A
JH160B



JH200A
JH200B



JH250A
JH250B



JH315A
JH315B

| model | size | | speed rpm | airflow | | power W | voltage/freq V/Hz | current A | Noise dBA | Ins class |
|--------|------|------|--------------|---------|-------------------|------------|----------------------|--------------|--------------|-----------|
| | mm | in | | CFM | m ³ /h | | | | | |
| JH100A | 100 | 3.9 | 2600 | 112 | 190 | 60 | 240/50 | 0.18 | 50 | F |
| JH100B | 100 | 3.9 | 2700 | 144 | 245 | 67 | 240/50 | 0.27 | 50 | F |
| JH125A | 125 | 4.9 | 2750 | 124 | 210 | 62 | 240/50 | 0.17 | 50 | F |
| JH125B | 125 | 4.9 | 2550 | 182 | 310 | 70 | 240/50 | 0.25 | 50 | F |
| JH150A | 150 | 5.9 | 2550 | 241 | 410 | 64 | 240/50 | 0.26 | 50 | F |
| JH150B | 150 | 5.9 | 2670 | 268 | 455 | 65 | 240/50 | 0.27 | 46 | F |
| JH160A | 160 | 6.3 | 2500 | 271 | 460 | 72 | 240/50 | 0.29 | 46 | F |
| JH160B | 160 | 6.3 | 2985 | 409 | 695 | 112 | 240/50 | 0.92 | 50 | F |
| JH200A | 200 | 7.9 | 2550 | 459 | 780 | 101 | 240/50 | 0.45 | 52 | F |
| JH200B | 200 | 7.9 | 2620 | 565 | 960 | 161 | 240/50 | 0.66 | 52 | F |
| JH250A | 250 | 9.8 | 2565 | 577 | 980 | 156 | 240/50 | 0.66 | 50 | F |
| JH250B | 250 | 9.8 | 2435 | 656 | 1115 | 175 | 240/50 | 0.73 | 50 | F |
| JH315A | 315 | 12.4 | 2525 | 795 | 1350 | 225 | 240/50 | 0.69 | 50 | F |
| JH315B | 315 | 12.4 | 2450 | 989 | 1680 | 303 | 240/50 | 1.27 | 52 | F |

InLine Box Fans



JD100A



JD150A

| model | size | | speed rpm | airflow | | power W | voltage/freq V/Hz | current A | Pressure Pa | noise dBA | Insulation class |
|----------|------|-----|--------------|---------|-------------------|------------|----------------------|--------------|----------------|--------------|---------------------|
| | mm | in | | CFM | m ³ /h | | | | | | |
| JD100A-H | 100 | 3.9 | 2400 | 191 | 325 | 73 | 230/50 | 0.31 | 328 | 64 | F |
| JD100A-M | 100 | 3.9 | 2140 | 124 | 210 | 65 | 230/50 | 0.28 | 218 | 61 | F |
| JD100A-L | 100 | 3.9 | 1870 | 110 | 187 | 61 | 230/50 | 0.26 | 328 | 58 | F |
| JD150A-H | 150 | 5.9 | 2195 | 247 | 420 | 137 | 230/50 | 0.59 | 403 | 67 | F |
| JD150A-M | 150 | 5.9 | 1995 | 220 | 374 | 123 | 230/50 | 0.55 | 393 | 65 | F |
| JD150A-L | 150 | 5.9 | 1715 | 191 | 325 | 114 | 230/50 | 0.52 | 383 | 62 | F |

i n n o v a t i o n i n m o t i o n

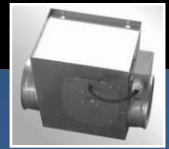
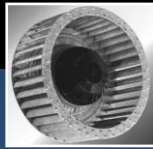


Heating

Ventilation

Air Conditioning

Refrigeration



Pelonis Technologies, Inc.

97 Great Valley Pkwy.
Malvern, PA 19355 USA
T +1.888.546.0524
F +1.610.647.0319
email: sales@pelonistech.com
www.pelonistechnologies.com

